

# AGENDA

**Meeting:** CALNE AREA BOARD  
**Place:** John Bentley School, White Horse Way, Calne SN11 8YH  
**Date:** Tuesday 16 October 2012  
**Time:** 6.30 pm

---

Including the Parishes of Calne Without, Bremhill, Hilmarton, Heddington, Cherhill, Compton Bassett and Calne.

---

**The area board welcomes and invites contributions from members of the public. The Chairman will try to ensure that everyone who wishes to speak will have the opportunity to do so.**

If you have any requirements that would make your attendance at the meeting easier, please contact your Democratic Services Officer.

**Refreshments, networking opportunities and a display stand regarding Victim Support will be available from 6.00 pm.**

---

Please direct any enquiries on this agenda to Alexa Smith (Democratic Services Officer), on 01249 706610 or [alexa.smith@wiltshire.gov.uk](mailto:alexa.smith@wiltshire.gov.uk)

or Jane Vaughan (Calne Community Area Manager), on 01247 721447 or [jane.vaughan@wiltshire.gov.uk](mailto:jane.vaughan@wiltshire.gov.uk)

The papers connected with this meeting are available on the Council's website at [www.wiltshire.gov.uk](http://www.wiltshire.gov.uk)

Press enquiries to Communications on direct lines 01225 713114/713115.

---

## Wiltshire Councillors

Cllr Alan Hill, Calne South and Cherhill  
Cllr Christine Crisp, Calne Rural (Chairman)  
Cllr Chuck Berry, Calne North

Cllr Howard Marshall, Calne Central  
Cllr Anthony Trotman, Calne Chilvester and Abberd (Vice Chairman)

	<b>Time</b>
<p>1     <b>Chairman's Welcome and Introductions</b></p> <p>The Chairman will welcome Councillor Jemima Milton, Portfolio Holder for Adult Care and Housing (North).</p>	<b>6.30 pm</b>
<p>2     <b>Apologies for Absence</b></p>	
<p>3     <b>Minutes</b> (<i>Pages 1 - 8</i>)</p> <p>To approve and sign as a correct record the minutes of the meeting held on 14 August 2012.</p>	
<p>4     <b>Declarations of Interest</b></p> <p>Councillors are requested to declare any pecuniary or non-pecuniary interests or dispensations granted by the Standards Committee.</p>	
<p>5     <b>Chairman's Announcements</b> (<i>Pages 9 - 24</i>)</p> <p>The Chairman will provide information about:</p> <ul style="list-style-type: none"> <li>a. Wiltshire online: digital literacy in Wiltshire (attached)</li> <li>b. Wiltshire and Swindon Local Nature Partnership (attached)</li> <li>c. Barrier busting proposals (attached)</li> <li>d. Minerals sites in Wiltshire and Swindon (attached)</li> <li>e. Informal adult education – update (attached)</li> <li>f. Community infrastructure levy (attached)</li> <li>g. From drought to flood event (attached)</li> <li>h. Change to wards (attached).</li> </ul>	<b>6.40 pm</b>
<p>6     <b>Partner Updates</b> (<i>Pages 25 - 38</i>)</p> <p>To receive an update from the partners listed below:</p> <ul style="list-style-type: none"> <li>a. Wiltshire Police (attached)</li> <li>b. Wiltshire Fire and Rescue Service (attached)</li> <li>c. NHS Wiltshire (attached)</li> <li>d. Calne Community Area Partnership</li> <li>e. Calne CAYPIG (Community Area Young People's Issues Group) – to include Youth Advisory Group appointments (attached)</li> <li>f. Town and Parish Councils</li> <li>g. Wiltshire Involvement Network Update report (attached).</li> </ul>	<b>6.50 pm</b>
<p>7     <b>Community Conversation</b></p> <p>The subject this time will be housing. Councillor Jemima Milton will</p>	<b>7.00 pm</b>

	begin the conversation.	
8	<b>Calne Environmental Network</b> A presentation regarding plans for a community garden.	7.45 pm
9	<b>Your Local Issues</b> Councillors will provide an update on community issues and progress on area board working groups. This will include:  <ul style="list-style-type: none"> <li>a. Skate board park working group – Councillor Marshall</li> <li>b. Highways working group (CATG) – Councillor Crisp</li> <li>c. Calne campus working group – Councillor Hill</li> <li>d. Sandpit Road (Section 106) working group – Councillor Trotman</li> <li>e. Air quality working group – Councillor Hill.</li> </ul>	8.00 pm
10	<b>Area Board Funding</b> To note the situation with regards to the Community Area Grants Scheme.	8.25 pm
11	<b>Close</b> The Chairman will set out arrangements for the next meeting.	

### **Future Meeting Dates**

Tuesday, 11 December 2012

6.30 pm

Hilmarton Community Centre, Poynder Way, Hilmarton  
SN11 8SQ

Tuesday 5 February

6.30 pm

Calne Town Hall (to be confirmed)

Tuesday 11 June

6.30 pm

Calne Town Hall (to be confirmed)



# MINUTES

**Meeting:** CALNE AREA BOARD  
**Place:** Compton Bassett Village Hall  
**Date:** 14 August 2012  
**Start Time:** 6.30 pm  
**Finish Time:** 8.30 pm

---

Please direct any enquiries on these minutes to:

Alexa Smith (Democratic Services Officer), on 01249 706610 or [alexa.smith@wiltshire.gov.uk](mailto:alexa.smith@wiltshire.gov.uk)

Papers available on the Council's website at [www.wiltshire.gov.uk](http://www.wiltshire.gov.uk)

---

## **In Attendance:**

### **Wiltshire Councillors**

Cllr Alan Hill, Cllr Christine Crisp (Chairman), Cllr Chuck Berry, Cllr Howard Marshall and Cllr Anthony Trotman (Vice Chairman)

### **Wiltshire Council Officers**

Janice Fortune (CEO of Develop for the Volunteer Centre), Karen Scott (Voluntary and Community Sector Development Manager), Alexa Smith (Democratic Services Officer) and Jane Vaughan (Community Area Manager)

### **Town and Parish Councillors**

Calne Town Council – Glenis Ansell, Mercy Baggs, Heather Canfer, Roy Golding and Paul Venton

Calne Without Parish Council – Richard Aylen and Ed Jones

Hilmarton Parish Council – Helen Hodgkinson and Mel Wilkins

### **Partners**

Wiltshire Fire and Rescue – Mike Franklin

Calne Community Area Partnership – Malcolm Gull and Anne Henshaw

**Total in attendance: 37**

---

<b><u>Agenda Item No.</u></b>	<b><u>Summary of Issues Discussed and Decision</u></b>
1	<p><u>Chairman's Welcome and Introductions</u></p> <p>The Chairman welcomed everyone to Calne Area Board and Compton Bassett Village Hall and introduced the councillors and officers present. The Chairman welcomed Councillor Jane Scott, Leader of Wiltshire Council.</p>
2	<p><u>Apologies for Absence</u></p> <p>Apologies were received from Brad Fleet (Service Director), Will Kay (Youth Development Coordinator), David Evans (Cherhill Parish Council) and Inspector Martin Schorah (Wiltshire Police).</p>
3	<p><u>Minutes</u></p> <p>The minutes of the meeting held on 12 June 2012 were approved and signed as a correct record.</p>
4	<p><u>Declarations of Interest</u></p> <p>There were no declarations of interest.</p>
5	<p><u>Chairman's Announcements</u></p> <p>The Chairman drew attention to the written announcements included in the agenda pack.</p> <p>Wiltshire Council was currently seeking views on proposals to reduce street lighting to lessen energy usage and costs. Please visit the website for further information: <a href="http://cms.wiltshire.gov.uk/ieDecisionDetails.aspx?ID=633">http://cms.wiltshire.gov.uk/ieDecisionDetails.aspx?ID=633</a>.</p> <p>The state of environment report 2012 was now available. The report provides a strategic assessment of Wiltshire's environment and contains detailed information about each community area. Please see the environment section of the Wiltshire Intelligence Network for further information: <a href="http://www.intelligencenetwork.org.uk/environment">www.intelligencenetwork.org.uk/environment</a>.</p> <p>The Chairman explained that all residents would also have the opportunity to vote for the first Police and Crime Commissioner for Wiltshire Police on Thursday 15 November 2012. Please put the date of this election in your diary.</p>
6	<p><u>Partner Updates</u></p> <p>a. The written update from Wiltshire Police was noted. The representative Inspector Martin Schorah had sent his apologies for the meeting, however he was happy to respond to any questions (there were none raised at the meeting).</p>

	<p>b. The written update from Wiltshire Fire and Rescue Service was noted. Mike Franklin added that the service was about to start consultation on their business plan, as required by law. Further information to follow.</p> <p>c. The written update from NHS Wiltshire was noted.</p> <p>d. Calne Community Area Partnership were going through a review process and looking into what the partnership should be doing and how to achieve their aims. A more complete update would be provided at the next Calne Area Board meeting. The Chairman congratulated the partnership as the community hub had been shortlisted for a prestigious volunteering award in the Wiltshire Voluntary and Community Sectors Awards.</p> <p>e. There was no update from Calne CAYPIG (Community Area Young People's Issues Group) as the Youth Development Coordinator had sent his apologies.</p> <p>f. The Chairman asked for updates from town and parish councils. Calne Without Parish Council said their white gates project was ongoing and they were looking to install the gates as soon as possible. Hilmarton Parish Council also thanked the area board for the funding towards a refuge at Goatacre.</p>
7	<p><u>Community Conversation</u></p> <p>The Chairman spoke about how the area board was trying a new format for the meeting to encourage more people to become involved. Each meeting would include a conversation about a featured topic. Area board meetings would start earlier, at 6.30 pm, with the community conversation starting at 7.00 pm.</p> <p>In this introduction to the trial, the featured topic was 'Four Years of Wiltshire Council – how are we doing so far?' and the conversation was led by Councillor Jane Scott, Leader of Wiltshire Council.</p> <p>Councillor Scott explained that Wiltshire Council was a large and efficient organisation working locally through the eighteen area boards. Efficiency savings of approximately £100/105 million had been made over the last four years in large part due to the move to one unitary council from a county and district councils.</p> <p>During this period, although there had been a 28% reduction in funding from the Government because of the recession, no services had been cut and there had been no increase in council tax. Over four hundred employees had been lost and the organisation had looked at the management structure in the first instance. Wiltshire Council had now been running successfully for a year without a Chief Executive.</p>

The next challenges faced by Wiltshire Council were the ageing population, provision for vulnerable children and employment.

The conversation then covered the following main issues:

- Plans to improve Porte Marsh Industrial Estate to make it more attractive to businesses – Wiltshire Council was working with the Town Council on the neighbourhood plan. This included improving several tired areas in the town. Wiltshire Council funding was limited to providing services and it had a role to play in sourcing funds and pulling them together. Further investment from the private sector was needed.

#### **Decision**

**Councillor Scott would look into plans for Porte Marsh Industrial Estate and provide further information through the area board.**

- Monitoring outside contractors who look after vulnerable people – the Care Quality Commission regulate, inspect and review all adult care social services in England. In addition to this, Wiltshire Council officers conduct regular cold calling. Wiltshire Council had invested £54 million into adult social care. Please get in touch if you have any questions or concerns about individual cases.
- Wiltshire Council waste management strategy and a planning application from the Hills group – for legal reasons Councillor Scott was unable to comment on any large planning application. The facilities needed were changing since recycling in the county had progressed dramatically in the last six months as alternate week collection was rolled out across the county.
- The postponement of decisions about funding projects in Calne, including the skate park project, by the Hills Group (Landfill Tax Credits) linked to planning issues.

#### **Decision**

**Councillor Scott would look into the issue of deciding Landfill Tax credit applications from the Calne area by the Hills Group and report back through the area board.**

- Overcrowding and housing conditions in certain housing association properties – the neighbourhood plan looked to replace poor housing stock in the town. Councillor Hill commented that as the Town Council had engaged with consultation on the Core Strategy at the earliest opportunity, the town had been in a strong position to shape the development plan.
- Use of affordable housing by people who were not from Calne – housing had to be allocated on a needs basis. The housing allocation system was under review at present.
- Demand for affordable housing - there was a high demand for affordable housing. With the demography of the population changing specific groups of people (such as young people, single people, disabled people living in the community, elderly people and those receiving benefits or on low incomes)



	<p>were particularly in need of low cost homes.</p> <ul style="list-style-type: none"> <li>• Under-utilisation of housing stock by older people with homes bigger than they need – it would be inappropriate to make older people move and they may have a web of support in their community which if they lost would need to be replaced with services at a cost. This could lead to very lonely individuals.</li> <li>• Building a contingency fund into grant applications – if each application for a grant included a contingency fund, the area board would not be able to fund as many community group projects. The expectation was for sufficient research to be completed before the application was submitted. Guidance was available on the Wiltshire Council website for grant applicants and the Community Area Manager could help with submitting an application, and providing or signposting advice when asked, however it would not be possible/sustainable for the Community Area Manager to project manage every community project.</li> </ul> <p>The Chairman thanked Councillor Scott for her time. From the conversation, housing and employment issues were identified as possible topics for future area board meetings. Please get in touch if you have any further questions.</p>
8	<p><u>Volunteering in Wiltshire</u></p> <p>Karen Scott, Voluntary and Community Sector Development Manager, and Janice Fortune, CEO of Develop for the Volunteer Centre, gave a presentation about volunteering in Wiltshire.</p> <p>This covered the volunteering plan and the Spice Project, a time credits initiative. The volunteering plan was available to view on the Wiltshire Council website, or please email Karen on <a href="mailto:karen.scott@wiltshire.gov.uk">karen.scott@wiltshire.gov.uk</a>. The main aim of the plan was to promote a partnership approach to volunteering with quality volunteering opportunities across the county to meet the needs of those concerned. The Volunteer Centre was also seeking to make the usual recipients of services their providers, for example using mentors to work alongside volunteers with learning difficulties.</p> <p>An exciting time credits initiative was being piloted in Chippenham. Time credits were a way of thanking people for any time they choose to give to their community. If a person gave one hour of time to a community organisation, they earned one time credit. Time credits could then be spent on a range of activities in the local area, for example swimming pool sessions. The initiative was looking to involve more private companies, such as Bowood House, and national chains, such as Odeon cinemas.</p> <p>Officers were in discussion with Calne Area Partnership about how best to roll out the time credits initiative from Chippenham further into Calne, with a potential base at the community hub.</p> <p>The majority of organisations engaged with volunteering were seeking more</p>

	<p>volunteers. If you would like to become involved in volunteering, please call 0845 034 5250 or visit <a href="http://www.volunteercentrewiltshire.org.uk">www.volunteercentrewiltshire.org.uk</a>.</p>
9	<p><u>Wiltshire Online: Digital Literacy In Wiltshire</u></p> <p>The presentation to raise awareness of the digital literacy project would be given at the next Calne Area Board meeting.</p>
10	<p><u>Your Local Issues</u></p> <p>Councillors provided an update on community issues and progress on Calne Area Board working groups.</p> <p>a. Councillor Marshall reported the young people involved in the skate board park working group were committed to fundraising. They had arranged a dress down day, a car wash using facilities at the fire station and bag packing at Sainsburys. As mentioned earlier in the meeting, funding from the Hills Group was on hold, however another application had been submitted to Viridor.</p> <p>b. The Chairman provided an update about the highways working group, as included in the agenda pack. Since the update was written, the two roads put forward in the review of speed limits on C and unclassified roads at Compton Bassett and Kellaways had been accepted for the countywide review. The bid for the Goatacre refuge scheme to the substantive highways scheme had been successful. The footpath at Lake View was now virtually complete. Councillor Hill passed on thanks from the residents to the area board. The Quemerford Community Speedwatch volunteers had also been fully trained.</p> <p>A member of the public raised a query about an issue at Patford House Surgery in Calne where some bricks needed removing to improve wheelchair access. Councillor Marshall had looked at the site and agreed the issue needed to be addressed.</p> <p><b><u>Decision</u></b>  <b>The highways working group (Community Area Transport Group) would consider the issue of wheelchair access at Patford House Surgery at their next meeting.</b></p> <p>c. The written update from Calne campus working group was noted. Councillor Hill added that the project would now be presented to Cabinet on 23 October 2012, with a view to obtaining the necessary funding to create the campus.</p> <p>d. The written update from the Sandpit Road (Section 106) working group was noted. Councillor Trotman went through the update and the following recommendations from the group were endorsed by the area board:</p> <p><b><u>Decision</u></b>  <b>Calne Area Board would commission a metro count at the unadopted part</b></p>

	<p>of Oxford Road (next to the Murco garage).</p> <p><b><u>Decision</u></b> Calne Area Board would approve a consultation process with local residents on Oxford Road/Woodhill Rise.</p> <p><b><u>Decision</u></b> Calne Area Board would approve a four week trial of traffic calming measures in the vicinity of Portemarsh Road/Oxford Road junction, conditional upon a ground survey proving that it was a feasible programme of work.</p> <p><b><u>Decision</u></b> To move forward the Woodhill Rise – the Glebe cycle link forward ahead of the rest of the plan, in light of recent accidents in the area.</p>
11	<p><b><u>Area Board Funding</u></b></p> <p>Councillors were then asked to approve core funding for Calne Community Area Partnership covering the financial year 2012/13. The Chairman commented how pleased she had been with the work of the Partnership over the last twelve months and with the community hub in particular.</p> <p><b><u>Decision</u></b> Calne Community Area Partnership were awarded the whole year’s core funding of £8,465 with an agreement to release the first tranche of £4,233 immediately and the second tranche at an area board meeting in early 2013, on condition the Partnership Development Officer and the area board were content to do so.</p>
12	<p><b><u>Close</u></b></p> <p>The next area board meeting would be held again at the new start time of 6.30 pm on Tuesday 16 October at John Bentley School, with refreshments available from 6.00 pm. The Chairman thanked Councillor Scott and all who had attended the meeting for their contributions.</p>



# Chairman's Announcements

<b>Subject:</b>	<b>Wiltshire Online's digital literacy project</b>
<b>Officer Contact Details:</b>	Jenny Wilcockson – Digital Literacy Coordinator <a href="mailto:Jenny.wilcockson@wiltshire.gov.uk">Jenny.wilcockson@wiltshire.gov.uk</a> 01225 793349 / 07827993733
<b>Weblink:</b>	<a href="http://www.wiltshireonline.org">www.wiltshireonline.org</a>
<b>Further details available:</b>	Please see our website or contact Jenny Wilcockson for more information

## Summary of announcement:

Wiltshire Council recognises that access to online services is becoming increasingly essential to residents, businesses and organisations from the third sector. The importance of good, reliable connectivity and the ability to use online services with confidence are central themes to the Wiltshire Online programme.

The benefits of being online are well documented. Not only is the internet an effective tool in helping to reduce social isolation and loneliness, people can save up to £560 per year by using price comparison websites and shopping online (Price Waterhouse Cooper 2009). Digital skills are also vitally important for job seekers, with the majority of roles advertised today requiring some experience of computers. Plus, having a good web presence is crucial to success for private and third sector organisations. Social media is a useful means of communicating with clients and growing a customer base, as well as networking with peers. Anyone who is not online is definitely missing out on a wealth of opportunity.

To ensure that people across Wiltshire have the opportunity to learn the skills and access the technology they need to get online, Wiltshire Online is rolling out a programme of free computer support.

Over the next twelve months, a team of digital champion volunteers will be recruited in every community area. These volunteers will be given access to the resources and training required to help them support people in their local communities to learn the basics of computers and the internet. Digital champions can offer one-to-one or group support in a variety of different venues, including libraries, WiFi enabled cafes or community halls or even someone's own home. Subjects covered include mouse and keyboard skills, setting up a computer desktop, searching the web, using email, Skype, Facebook, online shopping and more. Wiltshire Online will also be encouraging businesses to engage with the programme to support their corporate social responsibility agendas.

This free support is available to all adults in Wiltshire, although particular emphasis is placed on reaching older people, people with disabilities and families on low income. To help support this delivery, Wiltshire Online is working with a number of partners, including the Wiltshire Library Service, Age UK, IT Can Help, Community First, Citizen's Advice Wiltshire and The Learning Curve.

This digital literacy initiative is already well underway in the Melksham community area. To date, a team of 12 digital champions have helped support nearly 30 people either get online for the first time or increase their confidence with computers and the web. Wiltshire Online is now launching its digital literacy programme in the Chippenham and Salisbury community areas, with plans to roll the initiative out across the county by March 2013.

For details about how to get involved, please visit [www.wiltshireonline.org](http://www.wiltshireonline.org) or contact Jenny Wilcockson, Digital Literacy Coordinator on 01225 793349 or [jenny.wilcockson@wiltshire.gov.uk](mailto:jenny.wilcockson@wiltshire.gov.uk)



## Chairman's Announcements

<b>Subject:</b>	<b>Wiltshire and Swindon Local Nature Partnership (LNP)</b>
<b>Officer Contact Details:</b>	Zoe Pittaway, Wiltshire & Swindon LNP Coordinator, hosted at Wiltshire Wildlife Trust, Tel: 01380 725670 extension 279, Email: <a href="mailto:zoep@wiltshirewildlife.org">zoep@wiltshirewildlife.org</a>
<b>Weblink:</b>	LNP website currently under development
<b>Further details available:</b>	<b>Further details on LNPs can be found on Defra's website:</b> <a href="http://www.defra.gov.uk/environment/natural/whitepaper/local-nature-partnerships/">http://www.defra.gov.uk/environment/natural/whitepaper/local-nature-partnerships/</a>

### Summary of announcement:

Over the last 6 months the Local Nature Partnership (LNP) has been developing across Wiltshire and Swindon. LNPs were introduced by Government in June 2011 as a new mechanism to help improve the health of our local environment. Ultimately LNPs will aim to raise the profile of the natural environment and enhance partnership working, in particular supporting the environment sector to engage more effectively with the business, community and health sectors.

All developing LNPs across the Country were asked to submit an application to Defra by 6<sup>th</sup> June 2012 outlining how the new partnership would function and what the LNP would aim to achieve. The Wiltshire & Swindon LNP engaged with a wide diversity of stakeholders from a range of sectors via workshops, meetings and talks. All of the feedback and comments that we received were incorporated in to the development of the LNP to ensure we built a useful and dynamic partnership.

Over the last two months we have been waiting to hear if our application for LNP status has been successful and I am now pleased to announce that the Wiltshire & Swindon LNP has officially been recognised by the Secretary of State. The Wiltshire & Swindon LNP Board will be meeting for the first time in September 2012.

Please find attached a short information sheet outlining what an LNP is, why the partnership will be important and how the LNP will function. Most importantly we hope you will be keen to respond to the key questions that we have included in the information sheet.

We will continue to keep you updated on the progress of the LNP and look forward to hearing from you soon.





## Chairman's Announcements

<b>Subject:</b>	<b>Barrier Busting Proposals</b>
<b>Officer Contact Details:</b>	David Bowater Programme Lead (Communities) <a href="mailto:David.Bowater@wiltshire.gov.uk">David.Bowater@wiltshire.gov.uk</a> Tel: 01225 713978
<b>Weblink:</b>	<a href="http://barrierbusting.communities.gov.uk/">http://barrierbusting.communities.gov.uk/</a>
<b>Further details available:</b>	<a href="http://barrierbusting.communities.gov.uk/">http://barrierbusting.communities.gov.uk/</a>

### Summary of announcement:

#### Barrier Busting Proposals

Many people have great ideas about how they could make their neighbourhood a better place to live.

Volunteers, community groups and social enterprises of many kinds would like to play a bigger role in local life. But sometimes barriers get in the way. Red tape, rules and regulations stop people putting good ideas into action. Not only is this frustrating – it means that local people miss out.

The Government have a 'Barrier Busting Team' to help with this problem.

New rules have been put in place for the way in which 'Barrier Busting' proposals can be submitted to government by local authorities, under the Sustainable Communities Act.

The rules retain the requirement that Wiltshire Council consults its communities and reaches agreement on proposals before submitting them.

The new rules mean, however, that the Local Government Association (LGA) can ask the Secretary of State to look again at proposals submitted by local authorities that have been turned down.

Examples of previous proposals submitted can be found on the government's Barrier Busting Portal:

<http://barrierbusting.communities.gov.uk/>

Anyone can use the portal to submit proposals directly. However, asking Wiltshire Council to submit a proposal means that the LGA can choose to appeal the decision if they are unhappy with the result.

If you have a suggestion for a barrier busting proposal that you think Wiltshire Council should submit, please say why and email these to: [David.Bowater@Wiltshire.gov.uk](mailto:David.Bowater@Wiltshire.gov.uk)



## Chairman's Announcement

### Minerals Sites in Wiltshire and Swindon

Wiltshire Council and Swindon Borough Council jointly submitted the Proposed Submission draft Aggregate Minerals Site Allocations Local Plan (the Site Allocations Plan) (formerly Development Plan Document (DPD))<sup>1</sup> to the Secretary of State for Communities and Local Government on 20 July 2012 along with supporting evidence reports and proposed minor modifications to the Plan stemming from the final, pre-submission round of consultation held earlier this year.

The Site Allocations Plan sets out a series of proposals for locating 7 new sand and gravel quarries within the plan area<sup>2</sup> to meet the councils' locally derived forecast provision requirements of 1.2 million tonnes per annum through the plan period up to 2026. Details of these sites are presented below.

Proposed minerals site name/location	Size of site hectares (ha)	Estimated resource yield	Current land use	Community Area
Cox's Farm	106.1	2,400,000	Agricultural	Royal Wootton Bassett and Cricklade
Blackburr Farm	49.7	812,000	Agricultural	
North Farm	75.6	300,000	Agricultural	
Land east of Calcutt	172.6	2,200,000	Agricultural	
Land at Cotswold Community	38.56	2,760,000	Agricultural/ former educational and residential facility	Malmesbury
Land near Compton Bassett	23.4	450,000	Agricultural	Calne
Extensions to Brickworth Quarry	25.2	1,948,000	Agricultural/ Woodland	South Wiltshire

The Site Allocations Plan has been developed with a restoration led approach at its heart (seeking biodiversity and amenity enhancements **not** the landfilling of putrescible waste), advocating upfront consideration of suitable after uses for the minerals sites in the document.

Copies of all submission documents including copies of representations made and other supporting documents which, in the opinion of the councils, are relevant to the preparation of the Site Allocations Plan are available to view on the councils' website at <http://www.wiltshire.gov.uk/planninganddevelopment/planningpolicy/mineralsandwastepolicy/aggregatemineralssiteallocations.htm> and on the councils' dedicated online consultation portal: <http://consult.wiltshire.gov.uk/portal>.

For those without access to a computer, hard copies of the documents can be viewed in the Council's offices in Chippenham (Monkton Park), Devizes (Browfort), Salisbury (Milford Street) and Trowbridge (County Hall and Bradley Road) and Swindon Borough Council (Wat Tyler House) as well as all local libraries.

<sup>1</sup> For minerals and waste matters, Wiltshire Council prepares its policy framework jointly with Swindon Borough Council.

<sup>2</sup> For minerals planning, the plan area delineates the boundary of Wiltshire and Swindon, excluding the New Forest.

Please note, due to office closures, documents will only be available at Browfort until 30<sup>th</sup> September 2012 and at Bradley Road until the 30<sup>th</sup> November 2012.

The Site Allocations Plan is now being subjected to an independent examination, conducted by the Planning Inspectorate to determine if the Plan can be considered sound. This is a continuous process running from the date of submission through to the receipt of the appointed Planning Inspector's Report.

Part of this process will involve hearing sessions where those invited to attend will have the opportunity to respond to matters raised by the appointed Planning Inspector. These hearing sessions are provisionally scheduled to commence on 23 October 2012. Once confirmed, all details relating to the examination process will be advertised and made available online. In addition, information will be sent directly to all those who made representations at the last stage in the plan preparation process informing them as to how they can get involved in the examination process.

**Officer Contacts:** Minerals and Waste Policy Team on 01225 713429  
Email [mineralsandwastepolicy@wiltshire.gov.uk](mailto:mineralsandwastepolicy@wiltshire.gov.uk)

**Weblink:**

<http://www.wiltshire.gov.uk/planninganddevelopment/planningpolicy/mineralsandwastepolicy/aggregatemineralssiteallocations.htm>

**Further details:**

<http://consult.wiltshire.gov.uk/portal>

## Chairman's Announcements

<b>Subject:</b>	<b>Informal Adult Education In Wiltshire - update</b>
<b>Officer Contact Details:</b>	Simon Burke Head of Business and Commercial Services Schools and Learning Wiltshire Council Tel. 01225 713840  <a href="mailto:Simon.burke@wiltshire.gov.uk">Simon.burke@wiltshire.gov.uk</a>

### Summary of announcement:

At its meeting held on 10<sup>th</sup> September 2012, Cabinet received a report on the outcome of the consultation on adult education in Wiltshire which had been undertaken and invited the cabinet to determine the future role of Wiltshire Council in respect of the provision of informal adult education. The full report can be found at <http://cms.wiltshire.gov.uk/ieListDocuments.aspx?CId=141&MId=6122&Ver=4>

The cabinet agreed to support the option which had been recommended by ten area boards and Children's Select Committee and resolved:

- i. that the council adopt the role to facilitate the provision of informal adult education at a local level;
- ii. to approve the appointment of a 0.6 full-time equivalent part-time adult education officer to work with local community networks to develop a sustainable locally-based adult education provision including information on, and promotion of, opportunities;
- iii. to allocate budget of £32,000 from the revenue savings accrued from the closure of Urchfont Manor College to meet the costs associated with the appointment.

It is envisaged that the adult education officer will work with a few community areas at a time, to develop appropriate systems which will become sustainable. The officer's work could relate to the development of the community campuses if supported by the relevant area boards.

We will now seek to appoint to this position as soon as possible. When in post, the officer will be able to brief Area Boards on the priorities for their work and how it may benefit individual community area.



# Chairman's Announcements

<b>Subject:</b>	<b>Community Infrastructure Levy (CIL) for Wiltshire – Consultation</b>
<b>Officer Contact Details:</b>	<b>CIL@Wiltshire.gov.uk</b>
<b>Weblink:</b>	<b><a href="http://consult.wiltshire.gov.uk/portal">http://consult.wiltshire.gov.uk/portal</a></b>
<b>Further details available:</b>	<b>The charging schedule and supporting documents can be viewed online at: <a href="http://www.wiltshire.gov.uk/communityinfrastructurelevy">www.wiltshire.gov.uk/communityinfrastructurelevy</a></b>

## Summary of announcement:

### What is the Community Infrastructure Levy (CIL)?

Wiltshire Council is in the process of preparing a Community Infrastructure Levy (CIL) charging schedule. CIL is a new charge that local authorities in England can place on new development in their area. The money generated through the levy will contribute to the funding of infrastructure to support growth.

### Why has Wiltshire decided to implement the Levy?

Government, through legislation, has restricted the ability of local authorities to pool funding for off-site infrastructure and expects them to develop CIL. The government believe that this tariff based approach provides the best framework to fund new infrastructure in a fair and transparent manner. CIL will provide 'up front' certainty about how much money developers will be expected to contribute.

### How will money from CIL be spent?

CIL is designed to contribute towards bridging the 'funding gap' between the total cost of new infrastructure required to support development and the amount of funding available from other sources. Wiltshire Council's Infrastructure Delivery Plan (IDP) identifies a range of physical, community and 'green' infrastructure projects that will be required to support the level of development as set out in the Wiltshire Core Strategy. Informed by the IDP, a list (known as the Regulation 123 list) will identify and prioritise which infrastructure projects will be eligible to receive money from CIL. CIL regulations also propose to allow the council to allocate a share of the levy raised in a local area to deliver infrastructure that local communities want – although this 'meaningful proportion' is yet to be set by the government.

### Consultation on the preliminary draft charging schedule

A preliminary draft charging schedule has been developed which sets out the proposed charging rates for Wiltshire. The council considers that the preliminary draft charging schedule strikes an appropriate balance between contributing to funding infrastructure and not putting development across Wiltshire at risk.

In accordance with Regulation 15 of the CIL Regulations 2010 (amended 2011), comments are invited on the preliminary draft charging schedule during the consultation period starting 1 October and ending 12 November 2012 at 5pm.





## Chairman's Announcements

<b>Subject:</b>	<b>"From Drought to Flood" Event</b>
<b>Officer Contact Details:</b>	Renate Malton, Project Officer, 07827 954856 <a href="mailto:renate.malton@wiltshire.gov.uk">renate.malton@wiltshire.gov.uk</a>

### Summary of announcement:

Wiltshire Council is organising another Flood Event this year: "From Drought to Flood" at Warminster Civic Hall on the 17<sup>th</sup> October 2012, 10am – 3pm.

Wiltshire has been lucky and not experienced some of the larger scale flash flooding incidents that some of our neighbouring authorities have, however we have had incidents of flash flooding of property in some of our smaller communities and groundwater levels are high for this time of year, so we are doing our best to try and raise awareness within the parishes.

We will have representatives from the National Flood Forum with examples of the various types of flood defences available, along with input from our partners such as Wessex Water and Wiltshire Fire & Rescue.

All are welcome to attend, and we are hoping to encourage as many flood wardens, community emergency volunteers and Town/Parish Council representatives to attend on behalf of their communities as we want to raise awareness of the current issues relating to flooding.



## Chairman's Announcements

<b>Subject:</b>	Calne Town Council wards
<b>Officer Contact Details:</b>	John Watling <a href="mailto:john.watling@wiltshire.gov.uk">john.watling@wiltshire.gov.uk</a> 01249 706599
<b>Weblink:</b>	<a href="http://www.wiltshire.gov.uk/council/elections/electoralboundaries.htm">http://www.wiltshire.gov.uk/council/elections/electoralboundaries.htm</a> (Note there will be a dedicated page from 3 September)
<b>Further details available:</b>	Electoral Services – 0300 456 0112

**Summary of announcement: In 2008 the Boundary Committee for England made recommendations on proposed town wards arrangements to take effect from May 2013.**

**When the 2009 Order was published by the BCE, it did not accurately reflect the intentions contained in their recommendations. The BCE has since been replaced by the Local Government Boundary Committee for England (LGBCE), but they have no power to amend the Order. Wiltshire Council is therefore consulting on an Order to rectify the error. If approved, the number of seats would be as follows:**

Calne Town Council should comprise 19 councillors, as at present, representing four wards:

Calne Chilvester & Abberd (4 seats)  
Calne North (5 seats)  
Calne Central (5 seats)  
Calne South (5 seats).

**No alterations are proposed to the town ward areas.**

**Any comments for or against this proposal, or to make any other proposal, should be sent to [elections@wiltshire.gov.uk](mailto:elections@wiltshire.gov.uk) before Friday 12 October 2012.**



# Crime and Community Safety Briefing Paper

## Calne Community Area Board

### 16<sup>th</sup> October 2012



#### 1. Neighbourhood Policing Team

**Sgt: Simon WRIGHT \***

##### **Town Centre Team**

Beat Manager – PC Hans MONAHAN

PCSO Barry MUSSARD

PCSO Gaynor BENNETT

PCSO Nicole YATES

PCSO Mark COOK

PCSO Andrew WILLOX

PCSO Shelley Gray ( currently on maternity leave)

##### **Rural Team**

Beat Manager – PC Alan BLAKE

#### 2. NPTs - Current Priorities & Consultation Opportunities:

Up-to-date details about Neighbourhood Policing Teams including team membership, current priorities and forthcoming community consultation events can be found on the Wiltshire Police Website.

**Anti-Social Behaviour in Back Road** - This priority runs from 06/07/2012 until 06/10/2012.

**Speeding on the A342 through Sandy Lane** - This priority runs from 19/07/2012 until 19/10/2012.

**Criminal Damage in Honeymead** - This priority has now been completed and marked a 'complete success'

□ Visit the new and improved website at: [www.wiltshire.police.uk](http://www.wiltshire.police.uk)

#### 3. Police Authority Representative: Chris Caswill

Please contact via Wiltshire Police Authority Tel. 01380 734022 or <http://www.wiltshire-pa.gov.uk/feedback.asp>

#### 4. Performance and Other Local Issues:

As you can see above, the Priority for Honeymead has been closed and marked a 'complete success' Numerous patrols were made, and the issues of Criminal Damage have now stopped. We will continue to monitor on a routine basis. The Sandy Lane priority will remain, and the Back Road priority will be reviewed and assessed shortly, currently it seems that ASB is decreasing, it looks promising that this will be a successful resolution.

**Joint Operation** - Calne Officers and PCSO's took part in a joint operation in the town to engage with local youths. The event took place on Friday 21<sup>st</sup> September and involved people from other agencies such as the Town Council, Wiltshire Council, Wiltshire Fire and Rescue and CARP. Two marked Police van's were used to transport people around the town to speak with the local youths who were out and about. Around 100 or so youths were spoken to, and some very good feed back was obtained. Some of the youths actually stated this was the first time they had been approached and canvassed by anyone and asked for their opinions to see what they wanted in the town. Some put forward proposals as to how they could fund-raise in an effort to help pay for the amenities that they would like. All the feedback received has been extremely positive and we are currently looking at how this planned one-off event can actually become a regular occurrence. I look forward to reporting back to you with more positive news in the near future.

**Blues and Zuz** which is a monthly disco held at the John Bentley School for youths aged eleven to sixteen has proved a success again. The September event saw 218 youths attending with 79 new faces turning up, the majority being new pupils to the School from year 7. This is really encouraging to see. As usual there were raffle prizes, an iPod shuffle for the boys and vouchers for the girls. The discos keep going from strength to strength. This latest event raised in excess of £500 in profit which will be fed back into the fund for future events.

**Nuisance mini moto's** - PC Blake and PCSO Yates were on patrol on Sunday 16<sup>th</sup> September Whilst driving up Sand Pit Lane towards the new housing estate they were met with a youth riding a 'pit bike' on the road coming towards them. He was not wearing a crash helmet, had no index plate, no driving licence and when the officers checked they also established he did not have insurance. The officers called in for assistance from colleagues in the Road Policing Unit and the youth was given a ticket giving him six points on his licence and a fine of several hundred pounds. The reality is that people engaging in this type of behaviour could easily kill themselves, or others. They are also not financially covered if they crash into another vehicle and cause damage. That is before you consider the noise nuisance and damage they cause to land which they should not be on.

**Tractors** - We are a rural county, and so perhaps it is only fitting that that I include a story about tractors. For some time Newcroft Road in Calne has been subject to parking and other traffic related issues, so when officers were called to the area on Saturday 28<sup>th</sup> August to a report of a potentially uninsured vehicle they were quick to make their way. On arrival they were a little surprised to see a tractor being driven around in the street! Again, officers called for assistance from their colleagues in the Roads Policing Unit, as a result the tractor was seized for being driven whilst uninsured, and a 47 year old local man was reported for summons in relation to it.

**Drugs** - PCSO's YATES and MUSSARD were on patrol when they located a group of Youths in the Newbury Avenue area of Calne. Some of the youths were found to be in possession of a small

amount of cannabis. Some good work from the PCSO's meant that the youths admitted to having drug paraphernalia and further bags of cannabis within the group. PC Monahan attended the scene and dealt with the young offenders in the company of their parents by giving reprimands. All the drugs were seized and disposed of by destruction.

**Criminal Damage** - Calne Police received a report of criminal damage from the Town Council. The offenders had decided they would vandalise an item of property, and for some reason chose one of the town CCTV camera's as their target. The irony will probably not be lost on you that it was the same CCTV camera that they chose to damage that actually provided the footage to allow local officers the chance to identify them! Two offenders have now been formally identified and are in the process of being dealt with within the criminal justice system. Perhaps they will think twice next time before engaging in this type of activity?

EN Calne	Crime				Detections	
	September 2010 August 2011	September 2011 August 2012	Volume Change	% Change	September 2010 August 2011	September 2011 August 2012
Victim Based Crime	911	895	-16	● -2%	19%	22%
Domestic Burglary	40	59	19	● 48%	5%	15%
Non Domestic Burglary	127	147	20	● 16%	3%	5%
Vehicle Crime	84	92	8	● 10%	2%	7%
Criminal Damage & Arson	228	174	-54	● -24%	12%	13%
Violence Against The Person	154	159	5	● 3%	52%	45%
ASB Incidents (Year to Date)	451	326	-125	● -28%		

Wiltshire Police are compared against a group of 8 most similar forces. Wiltshire Police have performed in line with peers and better than average for Total Crime & Violence Against the Person in the previous 12 month period (August 2011 - July 2012)

\* Detections include both Sanction Detections and Local Resolution

**Martin Schorah**

**Sector Head – Chippenham, Calne and Corsham**



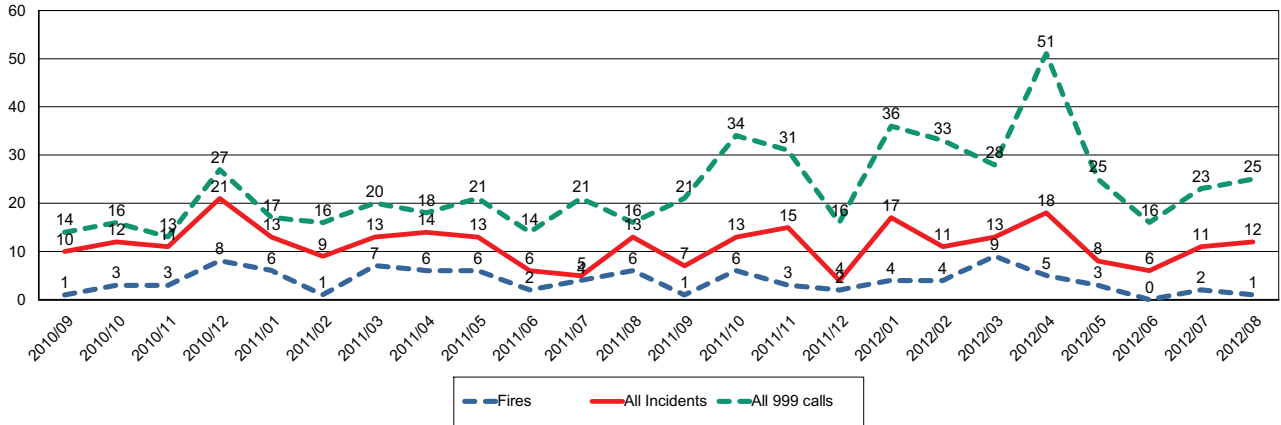




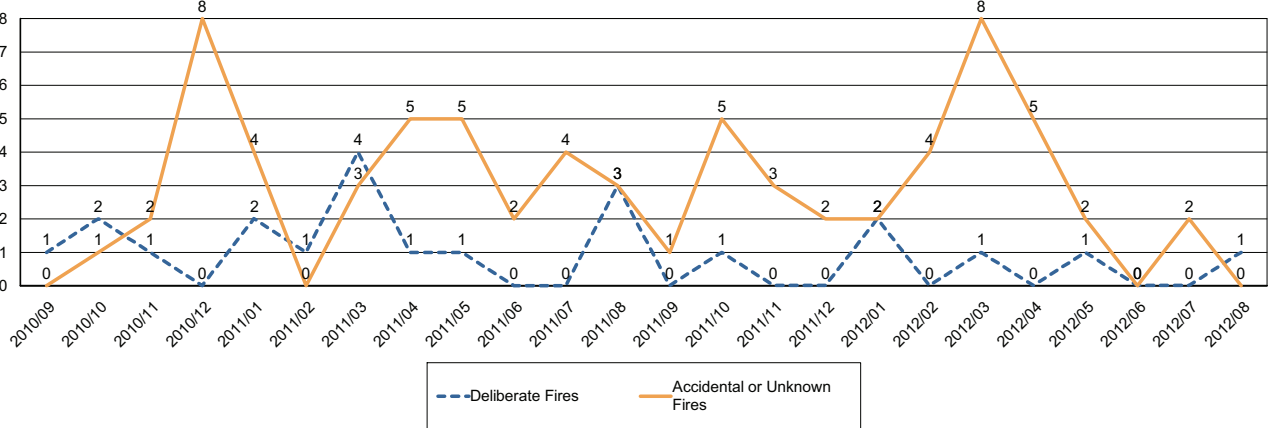
## Report for Calne Area Board

The following is an update of Fire and Rescue Service activity up to and including August. It has been prepared using the latest information and is subject to change.

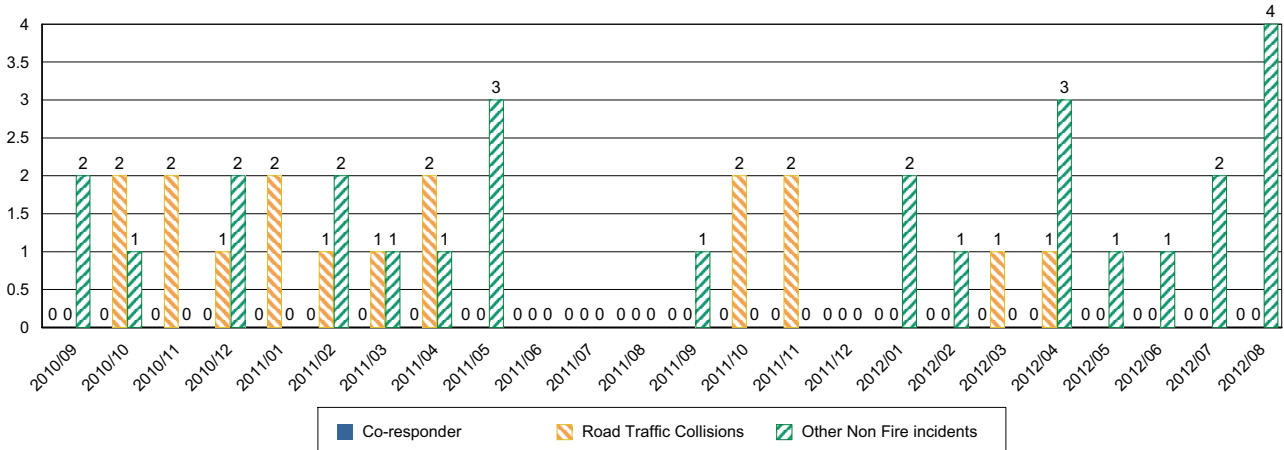
### Incidents and Calls



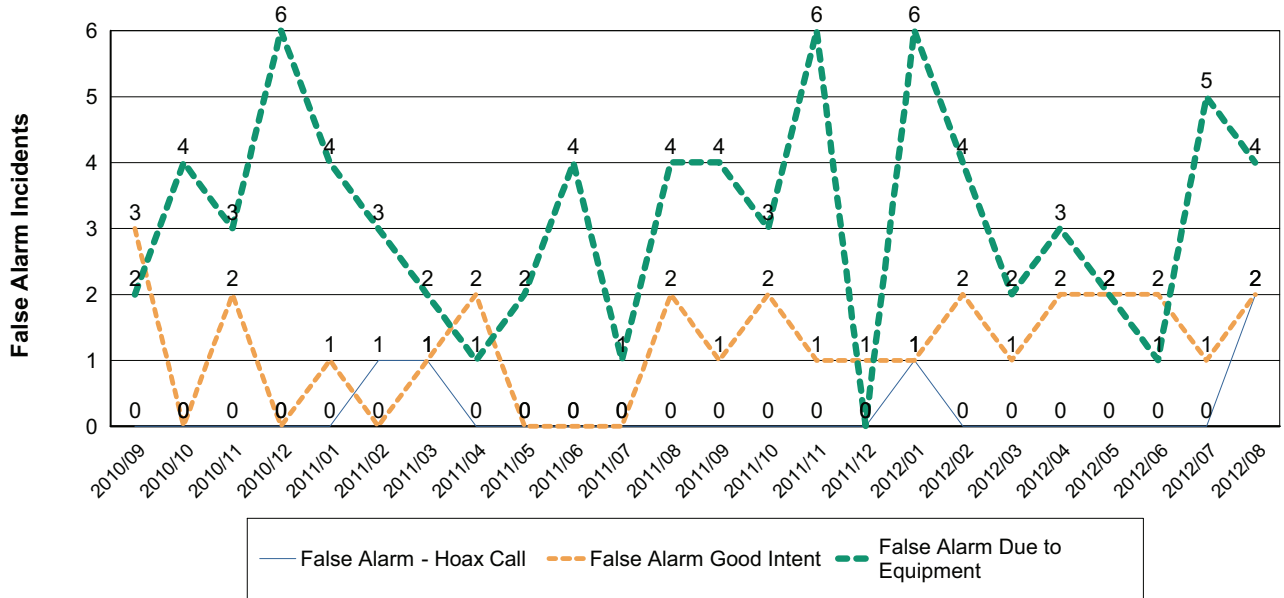
### Fires by Cause



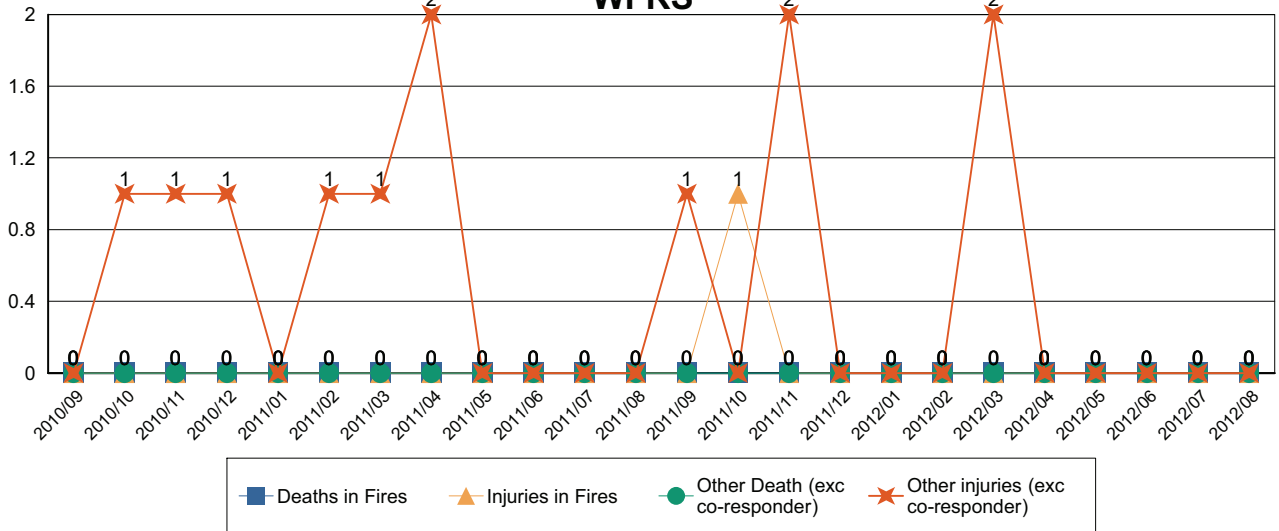
### Non-Fire incidents attended by WFRS



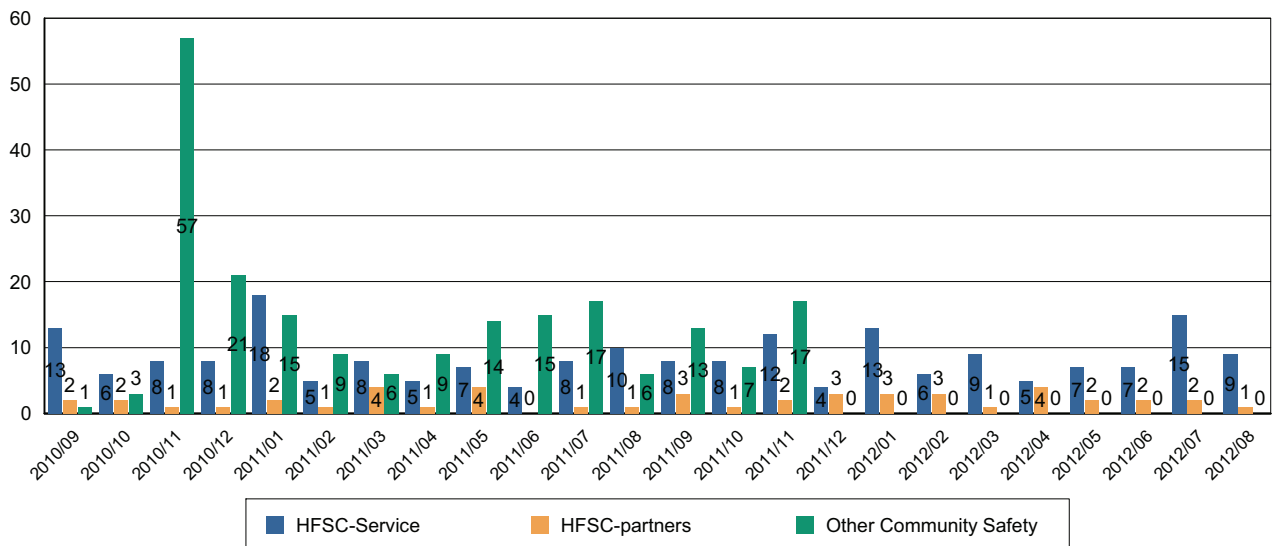
### Number of False Alarm Incidents



### Death & Injuries in incidents attended by WFRS



### Home Fire Safety Checks and other domestic safety



Comments and Interventions overleaf

## **September 2012 update**

### **Transition update**

Wiltshire's Clinical Commissioning Group (CCG), the new GP-led commissioning organisation which will be responsible for buying local health services in Wiltshire, continues to develop its commissioning arrangements before it applies for 'authorisation' status in November 2012.

The organisation will take up commissioning leadership from April 2013. The organisation has established its Clinical Governing Board, with 14 voting members (consisting of a Chairman, three GPs who will act as 'locality representatives', an additional three GPs, a registered nurse and a secondary care specialist doctor, one Chief Accountable Officer, one Chief Finance Officer, one practice manager and two lay members) and eight non-voting members: (three 'locality' directors, Wiltshire Council's Director of Social Services, the Director of Public Health for Wiltshire, one member of HealthWatch and two lay members).

The CCG is considering its staffing structure whilst developing those commissioning functions it intends to keep in house. It is estimated that the organisation will have around 70 staff members and it will hold responsibility for managing a budget of approximately £460m to support the commissioning of high quality health services in Wiltshire. Working closely with GPs and other clinicians, the CCG will lead on the development of plans and projects which help meet the NHS's required national savings target of £20 billion.

Wiltshire CCG will take up responsibility for commissioning in 'shadow' form from October 2012, with support from the existing Primary Care Trust staff.

### **Wiltshire CCG Stakeholder Assembly**

Representatives from patient groups, voluntary and community organisations, Army Primary Care, Wiltshire GPs and the local council met to discuss Wiltshire CCGs development and priorities across the county when Wiltshire CCGs held its Stakeholder Assembly on Tuesday 11 September.

Seventy Four delegates received presentations about Mental Health, Preventing Ill Health, Long Term Conditions (including dementia), Planned Care, End of Life, Community and Integrated Care and Unplanned Care & Frail Elderly with the assembly finishing with delegates given the opportunity to take part in a question and answer session with a panel consisting of health professionals and GPs. A wide range of questions were raised covering a variety of themes and attendees welcomed the potential to gain a deeper understanding and to hold meaningful discussions which have an impact on future decision making. The input from GPs was much appreciated as bringing a fresh dimension and honesty to the debate.

## **Stoptober - Smokefree Campaign**

Stoptober will begin on 1 October 2012 and provides a wide range of support, guidance and encouragement for smokers wishing to attempt to go smokefree for 28 days. Stoptober is a positive and supportive campaign to help people achieve their stop smoking goal.

Stoptober is a through the line initiative, incorporating TV, radio, print and online advertising, social media, a regional roadshow, ongoing customer communications and partnership support - as well a full PR campaign and national media partnership.

It will centre around a new Stoptober pack, mobile phone app and 28-day text support programme. These will be available for participants to order and download through [www.smokefree.nhs.uk/Stoptober](http://www.smokefree.nhs.uk/Stoptober). A range of other collateral including posters, information cards and in-pharmacy assets will be available on the NHS Smokefree Resource Centre [www.smokefree.nhs.uk/resources](http://www.smokefree.nhs.uk/resources).

### **NHS Wiltshire launches its Neurological Conditions booklet**

The fourth annual stakeholder event for people with long term neurological conditions was held at Devizes Sports Club on Friday 3 August.

The booklet has been compiled and created by NHS Wiltshire with input from people living with long term conditions and their carers. It gives information on the services available in Wiltshire and copies are now available for the public.

Neurological conditions include a wide range of conditions from stroke and brain injuries, Multiple Sclerosis, Parkinsons Disease and Motor Neurone Disease, through to very rare often genetic conditions.

Some conditions cause progressive decline and disability whilst others can cause sudden unpredictable periods of symptoms after long periods of general good health.

To view the booklet online go to:

<http://www.wiltshire.nhs.uk/Downloads/Publications/leaflets/NHS-Neurology-booklet.pdf>

### **The next PCT Cluster Board Meeting will be held on Wednesday 26 September at 10am in the Conference Room, Southgate House, Pans Lane, Devizes.**

Members of the public are welcome to attend. Papers are published a week before the meeting on [www.wiltshire.nhs.uk](http://www.wiltshire.nhs.uk) or on request from Stacey Saunders, NHS Wiltshire (tel: 01380 733839, email: [stacey.saunders@wiltshire.nhs.uk](mailto:stacey.saunders@wiltshire.nhs.uk))

# Calne Area Board

## Youth Advisory Group (YAG) Proposal

### **Background**

Wiltshire Council has for the last year been piloting 'Youth Advisory Groups' or (YAGs) joined to or associated with the local Area Board. The concept for a YAG is a group of young people that advises and or works alongside adults on issues of importance to them or that organisations ask for their opinion on. YAGs also require a young person under the age of 25 to act as chair.

### **Proposal**

The proposal outline here for Calne is to build upon the success of the Calne Area Young Peoples Issue group (CAYPIG) and the use of 'Open Space' facilitation techniques, enabling larger numbers of young people and adults to engage in meaningful conversations of importance to them simultaneously. The idea is again to create a single point for young peoples participation within the Town, where all organisations working with young people come together to work alongside young people, supporting them to find solutions/projects that increase their life experiences growing up in the Area.

### Venue

Building on the success of the CAYPIG model this time the YAG group would like to see wider representation of young people attending from Springfield's Academy and voluntary sector organisations as well as from John Bentley School and Wiltshire Councils Youth Service. To achieve this it is proposed YAG meetings take place at a neutral venue such as the Town Hall, taking place six times per year, the month preceding an Area Board, enabling young people to take ideas/issues from the YAG and feed them naturally into the Area board the following month.

### Method

The group would comprise of young people representing their respective organisations, supported by the appropriate adults working alongside them from said organisation. It is envisaged young people from the following organisations would be approached and asked if they would like to be a part of a newly formed YAG...

John Bentley School

Springfield's Academy  
 Calne Youth Work Team (Wiltshire Council)  
 Calne Church Youth Group  
 Scouts  
 Air Cadets  
 Army Cadets  
 Sports Clubs

Town and County Councillors, Area Board Manager, Calne Town Council, Calne Area Planning Partnership (CAPP) and other organisations where appropriate will also be invited to send representation to YAG meetings, as well as local schools and youth groups.

Meetings would comprise of a morning session where adults and young people worked together on their chosen projects followed by a shorter afternoon slot where the respective adults could work practically on the best way respond to the mornings discoveries. The aim is to hold six meetings over the coming academic year 2012/2013, in the months that precede an Area Board meeting.

A nomination process and election of a young person as Chair within the new YAG would need to take place within the group once it was formed. The elected Chair would then receive training and support for the role.

### **Resources**

Building – Calne Town Hall  
 Facilitation – Wiltshire Council Youth Work Team  
 Administration – Wiltshire Council Youth Work Team

### **Representation**

The table is intended to show how a broad range of representation of organisation and young people could be achieved within Calne and still enable a productive working group using the Open Space Methodology.

Numbers below are a guide and would need to be negotiated with each respective organisation. Organisations would be free to increase or decrease the numbers of young people they wanted to enable participation, though the onus would be on the organisation to ensure the appropriate ratio of adults to young people attended each meeting.

Organisation	YP Representatives	Adult Representatives
John Bentley School	10/20	1/2
Springfield's Academy	10	1/2
Calne Youth Work Team (Wiltshire Council)	10	1/2

Calne Church Youth Group	5	1
Scouts	5	1
Air Cadets	5	1
Army Cadets	5	1
Sports Clubs	5	1

**End**

This is a working document and any feedback and discussion is welcomed. Please feel free to contact me to talk through anything outline above. If adopted individual agreement would need to be obtained from each organisation with respect to their participation in the Youth Advisory Group (YAG) project.

Will Kay  
 Youth Development Co-ordinator Calne  
 The Grove Youth Development Centre for Young People  
 Priestley Grove  
 Calne  
 SN118EF

Tel: 01249 812 509  
 07990 908 550

email: [William.Kay@wiltshire.gov.uk](mailto:William.Kay@wiltshire.gov.uk)





Wiltshire Involvement Network (WIN)  
Report to Wiltshire Area Boards  
June 2012 to August 2012

WIN is one of a nationwide system of Local Involvement Networks (LINks) set up under the *Local Government and Public Involvement in Health Act 2007* to listen to the concerns of local people, community groups and organisations about their health and social care services. They all want to see these services change for the better. By sharing your views and experiences of health and social care in Wiltshire, you can help influence how services are planned and run. The work that WIN has carried out from June to August 2012 is set out below:

- The WIN Outreach Group met three times to discuss its work plan and arrangements for representing WIN at all area board meetings.
- The WIN Officer attended the Regional LINks meeting in Taunton to hear updates from the Great Western Ambulance Service, the Care Quality Commission and NHS South West.
- The WIN Chair, Phil Matthews, attended a meeting of Wiltshire Council's Shadow Health and Wellbeing Board, on which he represents WIN. He also represents WIN on Wiltshire Council's Health and Social Care Select Committee.
- The WIN Enter and View sub group met to discuss its work programme and plan informal visits to Athelstan House, Malmesbury, and Hungerford House, Corsham. These took place in July. (WIN has the statutory power to enter and view any health or social care facility in Wiltshire.)
- In June, WIN held a public meeting in Chippenham with speakers from the Great Western Hospital Foundation Trust ("GWH") who gave an update on the services they provide within the Wiltshire community, and their Productive Ward initiative. The Royal United Hospital Bath gave an update on their work with in-patients with dementia, and the NHS Wiltshire representative spoke about the setting up of the shadow Clinical Commissioning Group for Wiltshire. 49 people attended the meeting.
- In July, WIN held a public meeting in Salisbury with speakers from Wiltshire Council updating attendees on how Healthwatch in Wiltshire might look, and on their digital online initiative. The GWH representative spoke about the services it provides within the Wiltshire community, and a speaker from the Wiltshire Wildlife Trust gave a presentation about the *Wiltshire Wellbeing Project* and its work with people who have mental health problems. 44 people attended the meeting.
- WIN members and staff attended the following events:
  - The launch of NHS Wiltshire's *Falls and Bone Health Strategy* and participated in the consultation.
  - the Wiltshire Equality Network meeting in Trowbridge
  - Wiltshire and Swindon Users' Network welfare reform event.

- Wiltshire Council's Friary Voices consultation event.
  - *GWH Developing a Nursing Strategy* consultation event
  - NHS Wiltshire's Long Term Neurological Conditions Steering group event
  - AWP LINK Stakeholder event
- The WIN Healthwatch Implementation Task Group met with a representative from Wiltshire Council to be updated on the progress of Healthwatch Wiltshire.
  - The WIN Chairs met with the Wiltshire and BANES Compliance Inspector for the Care Quality Commission (CQC) to share information and discuss issues of concern. These meetings take place on a bi-monthly basis and enable WIN to have open and clear communication with the CQC.

A report of all meetings attended by members and staff is produced and shared with the wider membership and published on the WIN website.

If you would like to be involved with WIN, or find out what our future plans are contact us on 01380 871800, [winadmin.wsun@btconnect.com](mailto:winadmin.wsun@btconnect.com) or find us online at [www.wiltshireinvolvementnetwork.org.uk](http://www.wiltshireinvolvementnetwork.org.uk)